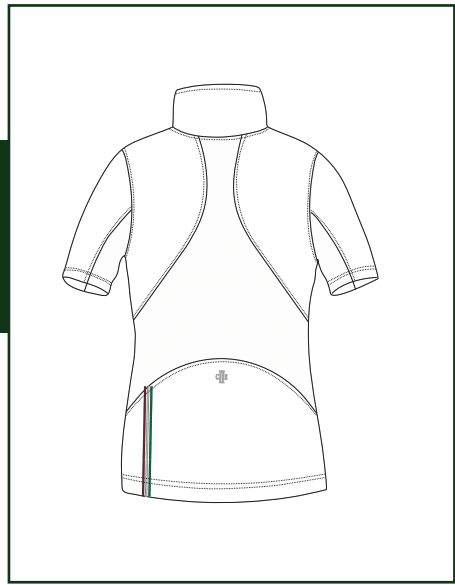




C2E
EQUISENTIALS



BAKERSFIELD LADIES ZIP NECK SHOWSHIRT

Introduce the C2E Bakersfield Show Shirt to your collection – a high-performance, eco-friendly show shirt designed for female riders who demand both style and function. Crafted with sustainability and comfort in mind, this shirt is a must-have for training and competition.

Key Features & Benefits:

- **Sustainable & Stretchy Fabric:** Made from 84% recycled polyester and 16% spandex (165g/m²), providing durability, flexibility, and eco-conscious appeal.
- **Breathable Mesh Panels:** Strategically placed under the sleeves and on the back to enhance airflow and regulate temperature.
- **Sun Protection & Quick-Dry Properties:** Keeps riders cool, dry, and protected from UV rays.
- **Sleek Zipper Placket:** Features a YKK 3 reversed coil zipper with a stop puller for a secure and polished look.
- **Elegant C2E Branding:** Small embroidery on the front left collar, a chest logo on the left side, and a subtle mid-center back embroidery.
- **Signature Core Color Detail:** A woven core color band on the left side back adds a stylish touch.
- **Lightweight & Comfortable:** Perfect for warm-weather riding and layering under competition jackets.

CARE INSTRUCTIONS

- **Machine Wash Cold:** Preserves fabric performance and elasticity.
- **Use Mild Detergents:** Avoid harsh chemicals that may affect sun protection and quick-dry properties.
- **No Bleach or Ironing:** Protects fabric integrity and embroidered details.
- **Hang Dry or Tumble Dry Low:** Ensures longevity and maintains shape.

WHY CHOOSE BAKERSFIELD FOR YOUR STORE?

- **Eco-Friendly & Trend-Forward:** Appeals to riders seeking sustainable, high-quality apparel.
- **Versatile for Training & Competition:** Designed for performance and style in any equestrian setting.
- **Innovative Fabric Technology:** Sun protection and moisture-wicking ensure all-day comfort.
- **Elegant Yet Functional:** A sophisticated design that meets the modern rider's needs.
- **Competitive Edge in the Market:** A unique blend of sustainability, performance, and style.

Offer your customers the ultimate blend of innovation, style, and comfort with the C2E Bakersfield Show Shirt – the perfect addition to any equestrian wardrobe.

SIZES

Available sizes:

XXS-XS-S-M-L-XL-XXL

COLORS

Available Colors:

0289 Navy 0000 White
0007 Black